



Certificate of Analysis

Amended

Powered by Confident Cannabis
1 of 1

CBD Hemp Flower

NV
Las Vegas, NV 89119
orders@wholesalecbdflower.com
(702) 338-6941
Lic. #

Sample: 2008NVC1908-11210

Strain: Sour Space Candy

Sample Received: 08/20/2020; Report Created: 08/20/2020

Sour Space Candy

Plant, Flower - Cured
Harvest Process Lot: ; METRC Batch: ; METRC Sample:



The photo on this report is of a sample collected by the lab and may vary from the final packaging

Safety

Not Tested Pesticides	Not Tested Microbials	Not Tested Mycotoxins
Not Tested Solvents	Not Tested Heavy Metals	Not Tested Foreign Matter

Cannabinoids

<LOQ THCa	<LOQ Total Potential THC	17.121% Total Potential CBD	NT Moisture
--------------	-----------------------------	--------------------------------	----------------

Analyte	LOQ	Mass	Mass
	%	%	mg/g
THCa	<0.110	<0.110	<1.10
Δ9-THC	<0.110	<0.110	<1.10
CBD	0.110	3.942	39.42
CBDa	0.110	15.027	150.27
CBC	0.055	0.258	2.58
CBG	0.055	<0.055	<0.55
CBN	0.110	<0.110	<1.10
THCV	0.055	0.098	0.98
Δ8-THC	0.055	<0.055	<0.55
CBGa	0.055	0.192	1.92
CBDV	0.055	<0.055	<0.55
Total		19.517	195.17

Total THC = THCa * 0.877 + Δ9-THC + Δ8-THC
Total CBD = CBDa * 0.877 + CBD
Total Edible THC = Δ9-THC + Δ8-THC
LOQ = Limit of Quantitation; The reported result is based on a sample weight with the applicable moisture content for that sample; Unless otherwise stated all quality control samples performed within specifications established by the Laboratory. Cannabinoids analyzed by SOP-021.

Notes:

Terpenes

Cinnamon	Hops	Chamomile	9.813 mg/g Total Terpenes
----------	------	-----------	------------------------------

Analyte	LOQ	Mass	Mass
	mg/g	mg/g	%
β-Caryophyllene	0.088	2.278	0.2278
β-Myrcene	0.088	1.665	0.1665
α-Bisabolol	0.088	1.526	0.1526
α-Humulene	0.088	1.194	0.1194
(-)-Guaiaol	0.088	0.931	0.0931
Linalool	0.088	0.468	0.0468
δ-Limonene	0.088	0.431	0.0431
Caryophyllene Oxide	0.088	0.427	0.0427
Nerolidol	0.088	0.296	0.0296
α-Pinene	0.088	0.234	0.0234
(-)-β-Pinene	0.088	0.207	0.0207
Ocimene	0.088	0.155	0.0155
α-Terpinene	0.088	<0.088	<0.0088
Camphene	0.088	<0.088	<0.0088
δ-3-Carene	0.088	<0.088	<0.0088
γ-Terpinene	0.088	<0.088	<0.0088
Geraniol	0.088	<0.088	<0.0088
(-)-Isopulegol	0.088	<0.088	<0.0088
p-Cymene	0.088	<0.088	<0.0088
Terpinolene	0.088	<0.088	<0.0088

LOQ = Limit of Quantitation; The reported result is based on a sample weight with the applicable moisture content for that sample; Unless otherwise stated all quality control samples performed within specifications established by the Laboratory. Terpenes analyzed by SOP-022.

Amended

6631 Schuster Street
Las Vegas, NV
(702) 826-2700
http://www.nvcann.com

Rev.1: Changed client name
Original CoA found at 1908NVC1326-657

Hui Wang
Scientific Director

Confident Cannabis
All Rights Reserved
support@confidentcannabis.com
(866) 506-5866



All pass limits are as specified in NAC 453A and Taxation Department Second Policies. Unless otherwise stated all quality control samples performed within specifications established by the Laboratory. This product has been tested by NV Cann Labs using valid testing methodologies and a quality system as required by Nevada state law. Values reported relate only to the product tested. NV Cann Labs makes no claims as to the efficacy, safety or other risks associated with any detected or non-detected levels of any compounds reported herein. This Certificate shall not be reproduced except in full, without the written approval of NV Cann Labs. Uncertainty and statement of conformity are available upon request. All analysis were performed at NV Cann Labs unless otherwise stated. Sampling Plan SOP-001 and Sampling Method SOP-027 were used to collect samples. If sample(s) are NOT collected by NV Cann Labs, result(s) apply to the samples as received.

Sample 179-020421-033

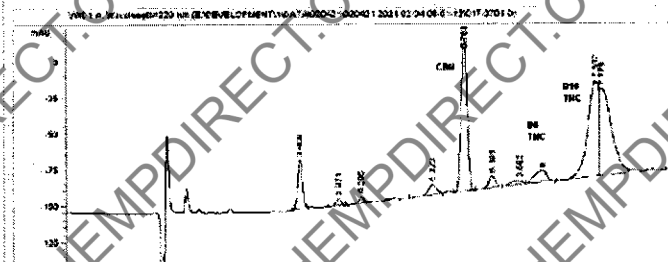
Delta 10

Sample Submitted: 02-04-2021; Report Date: 02-04-2021

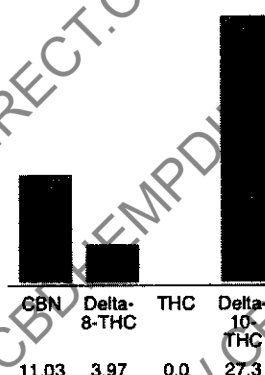
Delta 10

Distillate

Chromatogram



Cannabinoid Profile



Cannabinoid Profile by HPLC

0.00%
Calculated THC Yield

0.00%
Calculated CBD Yield

42.30%
Total Cannabinoids

Cannabinoid	% wt	mg/g
CBN	11.03	110.3
Delta-8-THC	3.97	39.7
THC	0.0	0.0
Delta-10-THC	27.3	273.0
Total Cannabinoids	42.30	423.0
Calculated THC Yield	0.00	0.00
Calculated CBD Yield	0.00	0.00
Calculated Maximum THC Yield = THC + 0.877 * THCA		
Calculated Maximum CBD Yield = CBD + 0.877 * CBDA		

Marin Analytics, LLC
250 Bel Marin Keys Blvd, Suite D4
Novato, CA 94949

415-936-6477 | Support@MarinAnalytics.com

Sara Biancalana
Sara Biancalana
Chief Scientist

This sample has been tested by Marin Analytics, LLC using valid testing methodologies and a quality system. Values reported relate only to the sample tested. Marin Analytics, LLC makes no claims as to the efficacy, safety or other risks associated with any detected or non-detected levels of any compounds reported herein. This Certificate shall not be reproduced except in full, without the written approval of Marin Analytics, LLC.



Certificate of Analysis

Powered by Confident Cannabis

Sample: 2106DBL0048.5908

METRC Sample:

Strain: CBN

Ordered: 06/03/2021; Sampled: 06/03/2021; Completed: 06/09/2021

CRY-210206N

Concentrates & Extracts, Cannabinoid Isolate, Other



Pesticides



Microbials



Mycotoxins



Heavy Metals



Foreign Matter



Solvents

Terpenes

Analyzed by 300.13 GC/FID and GC/MS

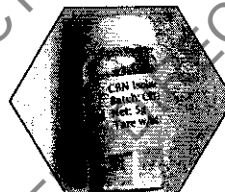
Compound	LOQ	Mass %	Mass mg/g
<LOQ Total Terpenes	<LOQ	<LOQ	<LOQ
α -Bisabolol	0.012	<LOQ	<LOQ
α -Humulene	0.012	<LOQ	<LOQ
α -Pinene	0.012	<LOQ	<LOQ
α -Terpinene	0.012	<LOQ	<LOQ
β -Caryophyllene	0.012	<LOQ	<LOQ
β -Myrcene	0.012	<LOQ	<LOQ
β -Pinene	0.012	<LOQ	<LOQ
Camphene	0.012	<LOQ	<LOQ
Caryophyllene Oxide	0.012	<LOQ	<LOQ
cis-Nerolidol	0.008	<LOQ	<LOQ
cis-Ocimene	0.008	<LOQ	<LOQ
δ -3-Carene	0.012	<LOQ	<LOQ
δ -Limonene	0.012	<LOQ	<LOQ
Eucalyptol	0.012	<LOQ	<LOQ
γ -Terpinene	0.012	<LOQ	<LOQ
Geraniol	0.012	<LOQ	<LOQ
Guaiol	0.012	<LOQ	<LOQ
Isopulegol	0.012	<LOQ	<LOQ
Linalool	0.012	<LOQ	<LOQ
p-Cymene	0.012	<LOQ	<LOQ
Terpinolene	0.012	<LOQ	<LOQ
trans-Nerolidol	0.004	<LOQ	<LOQ
trans-Ocimene	0.004	<LOQ	<LOQ

Cannabinoid Relative Concentration

Analyzed by 300.18 UHPLC/PDA

Compound	LOQ	Mass %	Mass mg/g	Relative Concentration
<LOQ Total THC	<LOQ	<LOQ	<LOQ	<LOQ
<LOQ Total CBD	<LOQ	<LOQ	<LOQ	<LOQ
99.900% Total Cannabinoids				
CBC	0.034	<LOQ	<LOQ	<LOQ
CBCa	0.034	<LOQ	<LOQ	<LOQ
CBD	0.034	<LOQ	<LOQ	<LOQ
CBDa	0.034	<LOQ	<LOQ	<LOQ
CBDV	0.034	<LOQ	<LOQ	<LOQ
CBDVa	0.034	<LOQ	<LOQ	<LOQ
CBG	0.034	<LOQ	<LOQ	<LOQ
CBGa	0.034	<LOQ	<LOQ	<LOQ
CBL	0.034	<LOQ	<LOQ	<LOQ
CBN	0.034	99.900	999.00	<LOQ
Δ^8 -THC	0.034	<LOQ	<LOQ	<LOQ
Δ^9 -THC	0.034	<LOQ	<LOQ	<LOQ
THCa	0.034	<LOQ	<LOQ	<LOQ
THCV	0.034	<LOQ	<LOQ	<LOQ
THCVa	0.034	<LOQ	<LOQ	<LOQ

Total THC = 0.877 * THC-A + Δ^9 -THC + Δ^8 -THC; Total CBD = CBDa * 0.877 + CBD



Benjamin G.M. Chew, Ph.D.
Laboratory Director

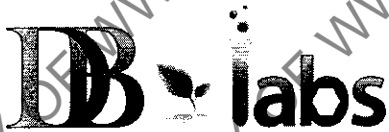
Glen Marquez
Quality Control



4439 Polaris Ave
Las Vegas, NV
(702) 728-5180

www.dblabslv.com

This report is considered highly confidential and the sole property of the customer. DB Labs will not discuss any part of this study with personnel other than those authorized by the client. The results described in this report only apply to the samples analyzed. The reported result is based on a sample weight with the applicable moisture content for that sample. LOQ = Limit of Quantitation. Pesticide LOQ = Instrument Limit of Quantitation, NA = Not Analyzed, ND = Not Detected, NR = Not Reported, NT = Not Tested. PGR = Plant Growth Regulator. Unless otherwise stated all quality control samples performed within specifications established by the Laboratory. This product has been tested by DB Labs, LLC (MME# 61887736101164525768) using valid testing methodologies and a quality system as required by Nevada state law. Edibles are picked up prior to final packaging unless otherwise stated. Values reported relate only to the product tested. The uncertainty of measurement associated with the measurement result reported in this certificate is available from the organization upon request. DB Labs makes no claims as to the efficacy, safety or other risks associated with any detected or non-detected levels of any compounds reported herein. This Certificate shall not be reproduced except in full, without the written approval of DB Labs.



Certificate of Analysis

Powered by Confident Cannabis

Sample: 2106DBL0048.5908

METRC Sample:

Strain: CBN

Ordered: 06/03/2021; Sampled: 06/03/2021; Completed: 06/09/2021

CRY-210206N

Concentrates & Extracts, Cannabinoid Isolate, Other

Pesticides

Analyzed by 300.9 LC/MS/MS and GC/MS/MS

Pass

Compound	LOQ PPB	Limit PPB	Mass PPB	Status
Abamectin	10	200	<LOQ	Pass
Acequinocyl	10	400	<LOQ	Pass
Bifenazate	10	400	<LOQ	Pass
Bifenthrin	10	100	<LOQ	Pass
Cyfluthrin	10	2000	<LOQ	Pass
Cypermethrin	10	1000	<LOQ	Pass
Daminozide	10	300	<LOQ	Pass
Dimethomorph	10	2000	<LOQ	Pass
Etoxazole	10	100	<LOQ	Pass
Fenhexamid	10	1000	<LOQ	Pass
Flonicamid	10	1000	<LOQ	Pass
Fludioxonil	10	500	<LOQ	Pass
Imidacloprid	10	500	<LOQ	Pass
Myclobutanil	10	400	<LOQ	Pass
Paclobutrazol	10	400	<LOQ	Pass
Piperonyl Butoxide	10	3000	<LOQ	Pass
Pyrethrins	10	2000	<LOQ	Pass
Quintozene	10	300	<LOQ	Pass
Spinetoram	10	1000	<LOQ	Pass
Spinosad	10	1000	<LOQ	Pass
Spirotetramat	10	1000	<LOQ	Pass
Thiamethoxam	10	400	<LOQ	Pass
Trifloxystrobin	10	1000	<LOQ	Pass
Plant Growth Regulators	10	50	<LOQ	Pass

Microbials

Analyzed by 300.1 Plating:QPCR

Pass

Quantitative Analysis	LOQ CFU/g	Limit CFU/g	Mass CFU/g	Status
Bile-Tolerant Gram-Negative Bacteria	10	100	<LOQ	Pass
Yeast & Mold	100	1000	<LOQ	Pass
Qualitative Analysis				Status
E. Coli	Detected or Not Detected		Not Detected	Pass
Salmonella	Detected or Not Detected		Not Detected	Pass

Mycotoxins

Analyzed by 300.2 Elisa

Pass

Mycotoxin	LOQ PPB	Limit PPB	Mass PPB	Status
Aflatoxins	4.0	20.0	5.7	Pass
Ochratoxin A	2.0	20.0	8.2	Pass

Heavy Metals

Analyzed by 300.3 ICP/MS

Pass

Element	LOQ PPB	Limit PPB	Mass PPB	Status
Arsenic	46	2000	<LOQ	Pass
Cadmium	46	320	<LOQ	Pass
Lead	46	1200	<LOQ	Pass
Mercury	46	400	<LOQ	Pass

Residual Solvents

Analyzed by 300.13 GC/FID and GC/MS

Pass

Compound	LOQ PPM	Limit PPM	Mass PPM	Status
Butanes	75	500	<LOQ	Pass
Ethanol	75	500	<LOQ	Tested
Heptanes	75	500	<LOQ	Pass
Propane	75	500	<LOQ	Pass



Benjamin G.M. Chew, Ph.D.
Benjamin G.M. Chew, Ph.D.
Laboratory Director

Glen Marquez
Glen Marquez
Quality Control



4439 Polaris Ave
Las Vegas, NV
(702) 728-5180
www.dblabslv.com

This report is considered highly confidential and the sole property of the customer. DB Labs will not discuss any part of this study with personnel other than those authorized by the client. The results described in this report only apply to the samples analyzed. The reported results are based on a sample weight with the applicable moisture content for that sample. LOQ = Limit of Quantitation. Pesticide LOQ = Instrument Limit of Quantitation, NA = Not Analyzed, ND = Not Detected, NR = Not Reported, NT = Not Tested. PGR = Plant Growth Regulator. Unless otherwise stated, all quality control samples performed within specifications established by the Laboratory. This product has been tested by DB Labs, LLC (NME# 61887736101164525768) using valid testing methodologies and a quality system as required by Nevada state law. Edibles are picked up prior to final packaging unless otherwise stated. Values reported relate only to the product tested. The uncertainty of measurement associated with the measurement result reported in this certificate is available from the organization upon request. DB Labs makes no claims as to the efficacy, safety or other risks associated with any detected or non-detected levels of any compounds reported herein. This Certificate shall not be reproduced except in full, without the written approval of DB Labs.